



**SAFEWAZE**

**NEW PRODUCT  
SPOTLIGHT**



**V-SELECT**

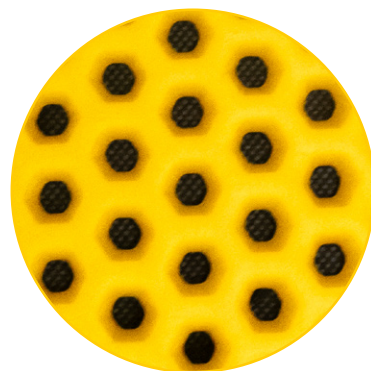


**BUILT FOR HEAT.  
BUILT FOR DURABILITY.  
BUILT FOR REAL JOBSITES.**

Built for welding and hot work environments, the V-Select Hot Work Harness combines aramid-sheathed webbing with high-temperature-resistant padding to deliver durability and comfort where heat and slag are part of the job.

## 1 Comfortable, Durable Padding:

High-temperature-resistant padding with breathable EVA lining for moisture and bacteria resistance.



## 2 Aramid Sheathed Webbing:

Aramid-sheathed webbing is designed to help resist damage from heat, flame and slag exposure, helping extend harness life in welding and hot work environments.



## 3 Effortless Adjustability:

This specially engineered webbing slides easily through the hardware making proper fit a breeze.

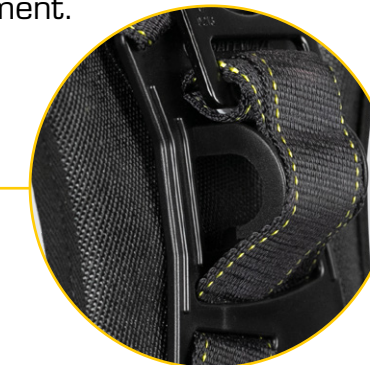


**ONLY** **HOT WORK HARNESS**  
ON THE MARKET FEATURING HIGH-TEMPERATURE-RESISTANT PADDING



## 4 Reinforced Integrated SRL Channel:

An exclusive design secures your SRL-P with less movement, decreasing long-term strain while providing easy day-to-day attachment.



## 5 Consolidated Sizing:

More diverse range per harness without sacrificing individual fit - plus exposed labels provide easy visibility.



## 6 Corrosion Resistant:

Double coated steel hardware and stainless steel grommets last longer under job site conditions to extend harness life.



# V-SELECT

The “V” stands for Value – and Versatility:  
With 4 models, you can choose the construction and full body design with the hardware style and D-rings you need.

## KEY SPECS:

Weight Capacity: ANSI 130-310 lbs.; OSHA 420 lbs.  
ANSI Standards: Z359.11-2021  
OSHA Standards: 1926.502, 1910.140  
40 Cal rated aramid webbing  
Char rating 600 degrees



**1 CH, 3D, QC Chest, TB Legs**

XS/S: 025-1837	M/L: 025-1838
XL/2X: 025-1839	3X: 025-1840



**2 FBH, 3D, FD, MB Chest/Legs**

XS/S: 025-1915	M/L: 025-1916
XL/2X: 025-1917	3X: 025-1918



**3 FBH, 1D, QC Chest, TB Legs**

XS/S: 025-1842	M/L: 025-1843
XL/2X: 025-1844	3X: 025-1845



**4 FBH, 1D, MB Chest/Legs**

XS/S: 025-1847	M/L: 025-1848
XL/2X: 025-1849	3X: 025-1850



Part of a complete  
Safewaze system -  
pair with Latitude  
Edge Arc Flash  
SRL-P for hot work  
protection.

Standard harness materials can degrade quickly when exposed to heat, sparks and slag. The **V-Select Hot Work Harness** is built to help extend harness life, improve comfort and maintain performance in environments where standard PPE breaks down.



225 Wilshire Avenue SW, Concord NC 28025

• 800-230-0319 • safewaze.com

