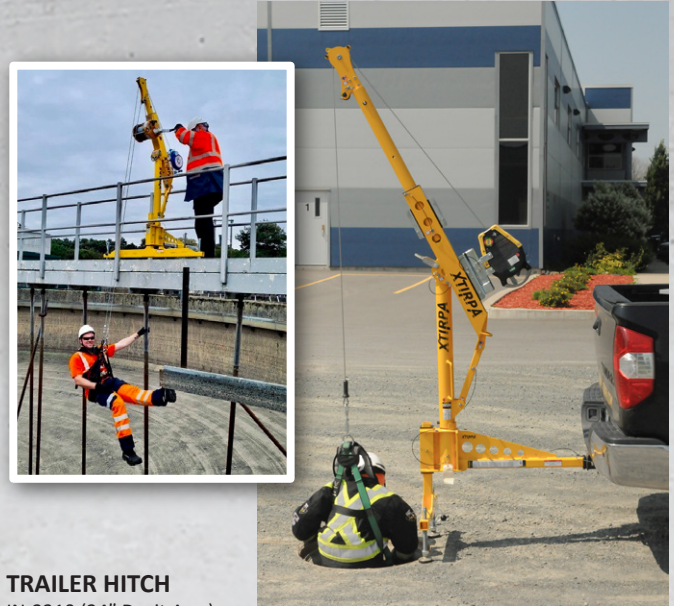




**ADAPTER**

IN-2210 (24" Davit Arm)  
IN-2003 (Mast)  
IN-2008 (Adjustable Wall Adapter)  
Lightweight, Portable, Accommodates walls from 6 inch to 15 inch thick



**TRAILER HITCH**

IN-2210 (24" Davit Arm)  
IN-2003 (Mast)  
IN-2126 (Trailer Hitch Mount)  
Lightweight, Easy Assembly, Versatile Options for Multiple Applications



**FIXED BASE**

IN-2210 (24" Davit Arm)  
IN-2003 (Mast)  
IN-2105 (Floor Adapter)  
Lightweight, Portable, Cost Effective Solution



**BARRICADE**

IN-2210 (24" Davit Arm)  
IN-2108 (Barricade)  
A2108-18 (Stabilizer)  
Lightweight, Portable, Easy Assembly, Expandable

**SOLUTIONS FOR WATER PLANTS AND TREATMENT FACILITIES**