

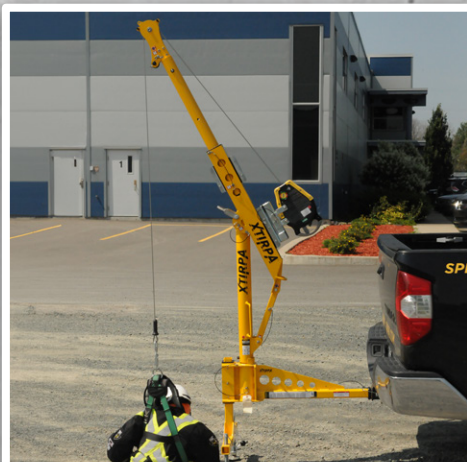
Safewaze is now carrying Xtirpa confined space systems. LIGHTWEIGHT. PORTABLE. EXPANDABLE.

Xtirpa is the premium global supplier of confined space fall arrest, rescue and retrieval equipment with a reputation for configurable solutions, advanced manufacturing and world-class training. Together, Safewaze and Xtirpa embrace innovation to maintain the highest levels of safety for confined space crews.

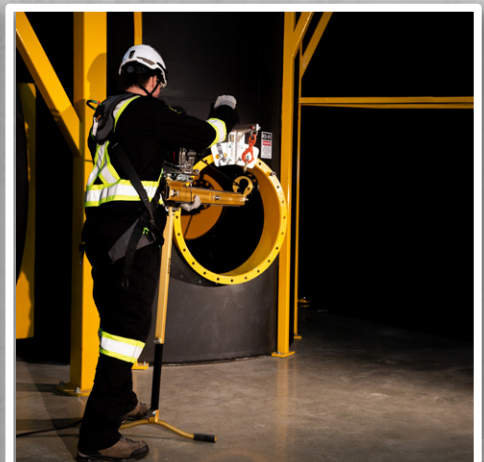
EXAMPLE SYSTEMS



Barricade Systems



Hitch Mount Systems



Horizontal/Vertical Entry



24" Davit Arms



96" Davit Arm



XLT System



Mobile "H" Base

XTIRPA systems support America's trade professionals wherever they work:

Public Works
 Infrastructure
 Construction
 Steel Erection

Metal Refining
 Oil & Gas
 Trenchwork
 Maritime/Shipbuilding

Food Processing
 Metal Refining
 Energy Production
 Water Utilities

Petrochemical
 Chemical Processing
 Pharmaceutical

CALL OR EMAIL TO LEARN HOW THE SAFEWAZE TEAM CAN CONNECT YOU TO YOUR CONFINED SPACE SOLUTION.