



SAFEWAZE

**PROTECTING
PEOPLE AT HEIGHT**



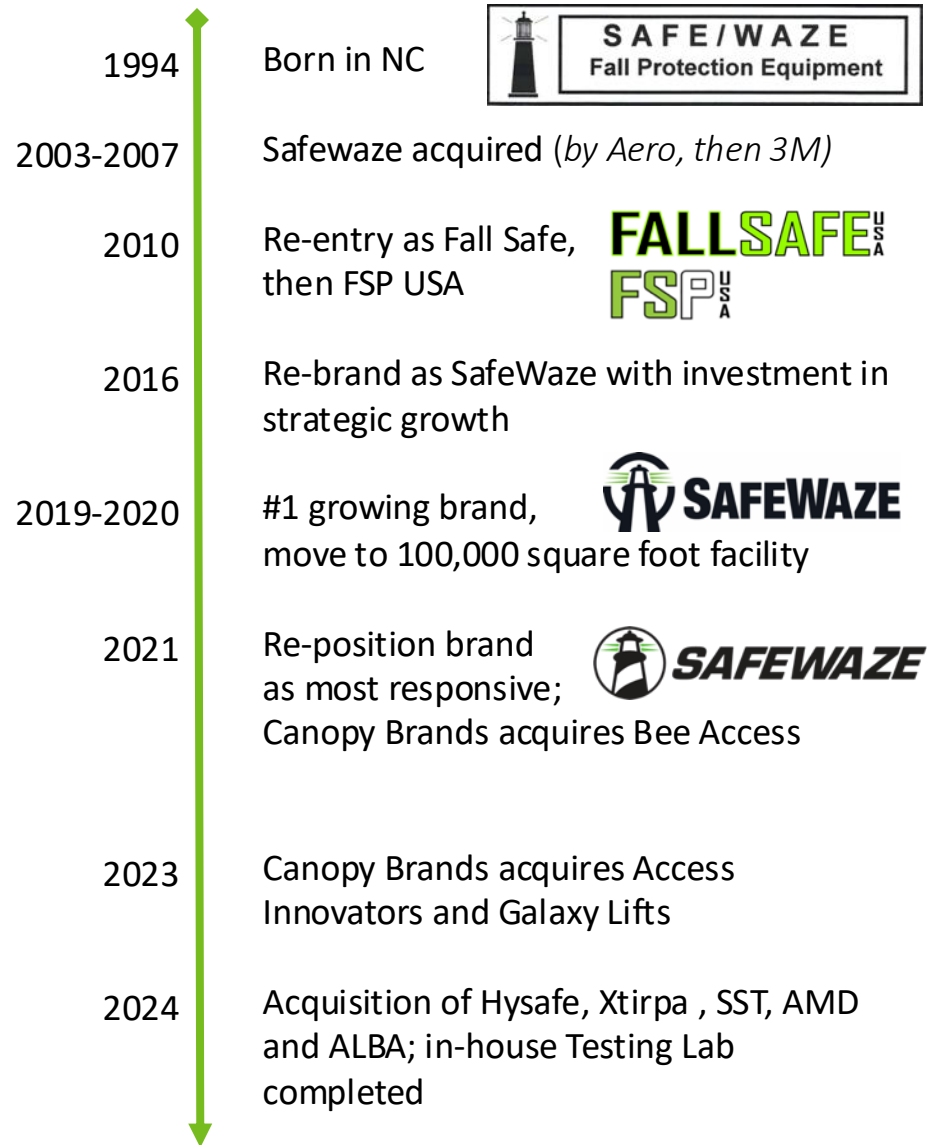


SAFEWAZE

Fall Protection's Most
Responsive Partner



HISTORY



In 1994, Safewaze co-founders and industry veterans Gene Verble and Darrell Hagler saw an opportunity to create both a safer workplace and a different type of company.

By pushing the boundaries of responsiveness, flexible solutions and expertise, Safewaze challenged the traditional experience. Why? Lives were on the line and worksite demands required a nimble, hard-working safety partner.

Technology and tools have evolved. Our DNA is the same. We remain **100% committed to redefining the customer experience in the fall protection industry.**

With a mission-focused team and investments in our 100,000 sq. ft. manufacturing facility, digital tools and custom engineering services, **we deepen our responsiveness by serving our customers exactly the way they want.**

OUR FOUNDATION



MISSION

We protect the lives and livelihoods
of workers at height

VISION

To be the best in fall protection

BRAND POSITION

*Fall Protection's Most
Responsive Partner*



CORE VALUES



SAFEWAZE / AT A GLANCE



100,000

square foot facility in Concord, NC



1,000

distribution points



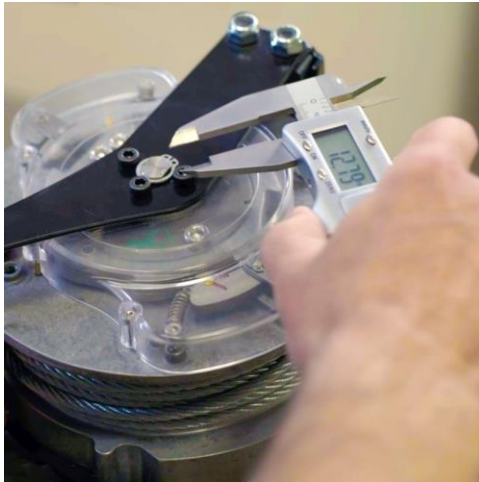
1 day

order, confirmation & tracking



125

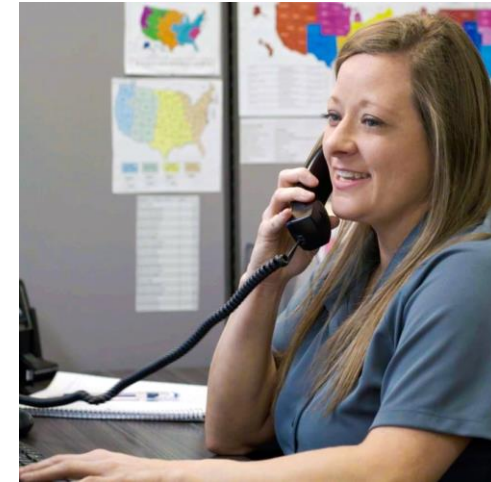
mission-focused employees



On-Demand Knowledge



Deep, Flexible Product Line



Ultra-Responsive Service



93%

customer retention



63%

employee net promoter score



17%

5-year annual sales growth

EQUIPMENT CATEGORIES



From anchors and harnesses to lanyards and lifelines – plus rescue and railings – Safewaze delivers **exactly what you need, exactly when you need it.** We proudly serve construction, general industry, energy and utilities as well as specialty markets with more than 1300 individual SKUs.



Anchors



Harnesses



Lanyards



SRLs



Xtirpa



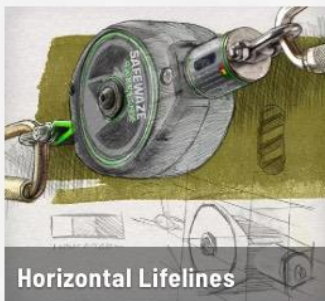
Rescue



Tool Cuffs



Ladder Systems



Horizontal Lifelines



Vertical Lifelines



Confined Space



Kits & Combos



Accessories



Material Handling

QUICKSERVICES



These value-added services help us continue to be **fall protection's MOST RESPONSIVE** partner.



QUICKRING

FAST
connection
to **LIVE**
FALL PROTECTION
EXPERTS



QUICKCONSULT

CONSULTATION
(on-site or virtual)
within **3** **DAYS**



QUICKTRIAL

PRODUCT
TRIALS ON
POPULAR
ITEMS
within **1** **WEEK**



QUICKQUOTE

SAME-DAY
QUOTES
ON
PRODUCT
orders



QUICKCUSTOM

CUSTOMIZED
PRODUCTS
and **kits**
DELIVERED
quickly



QUICKBUY

SAME
day order,
CONFIRMATION
and **TRACKING**

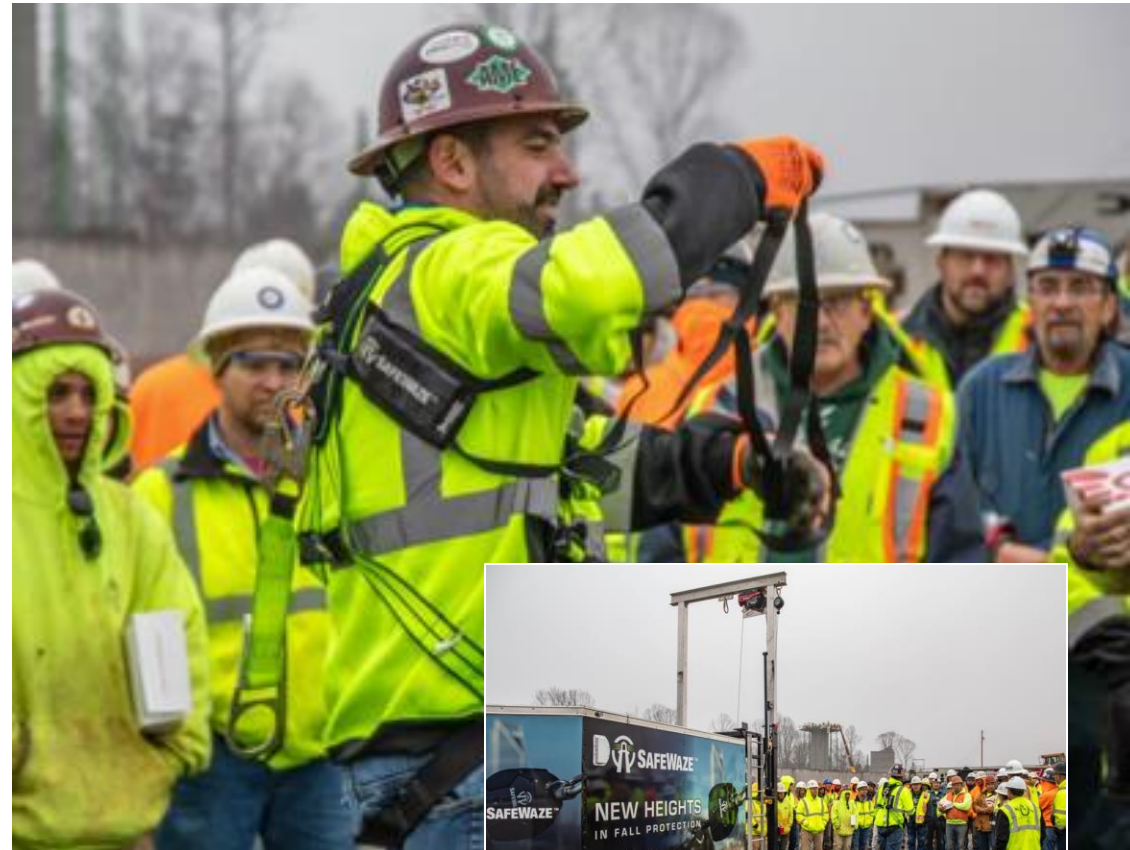


Investing in Education

We recognize education as a critical investment in our **mission to protect workers at height**. We provide general fall protection industry training as well as comprehensive product training.

Available at your location or ours, online or offsite, for groups from 5 to 500. Custom Safewaze demo trailers available in most regions.

- ABCDs of Fall Protection
- Rescue Requirements & Planning
- Equipment Inspection
- Regulatory & Compliance
- Competent Person Training
- Product Usage
- Fall Demonstrations
- Hazard Assessment





Keeping You Working

Protecting lives and livelihoods means keeping your equipment in action and on the jobsite. We offer certified service and repair on select items including rescue devices, confined space equipment and SRLs.

- Save money
- Minimize downtime
- Extend product life
- Maintain high levels of continued safety



WHAT OUR CUSTOMERS SAY



“ Safewaze is a **beacon of light** in a dark landscape of manufacturing. It’s nice to know there are companies out there still hustling to be **responsive.**”

Scott Wood

Inventory Manager, Hawkins-Graves Inc.

“ Of all the companies out there, **Safewaze is the most responsive.** They are unafraid to create unique products and are by far the friendliest to deal with. They just understand the market.”

Joey Kryz

Safety Manager, Fasteners, Inc.

“ The bigger companies all understand fall protection, but **Safewaze understands my industry and exactly what we do.** They can have direct conversations with our field people without an intermediary.”

Steve Hess

VP Safety & Training (retired), HEICO Construction Group



SALES ORGANIZATION

To Be Responsive, First We Listen



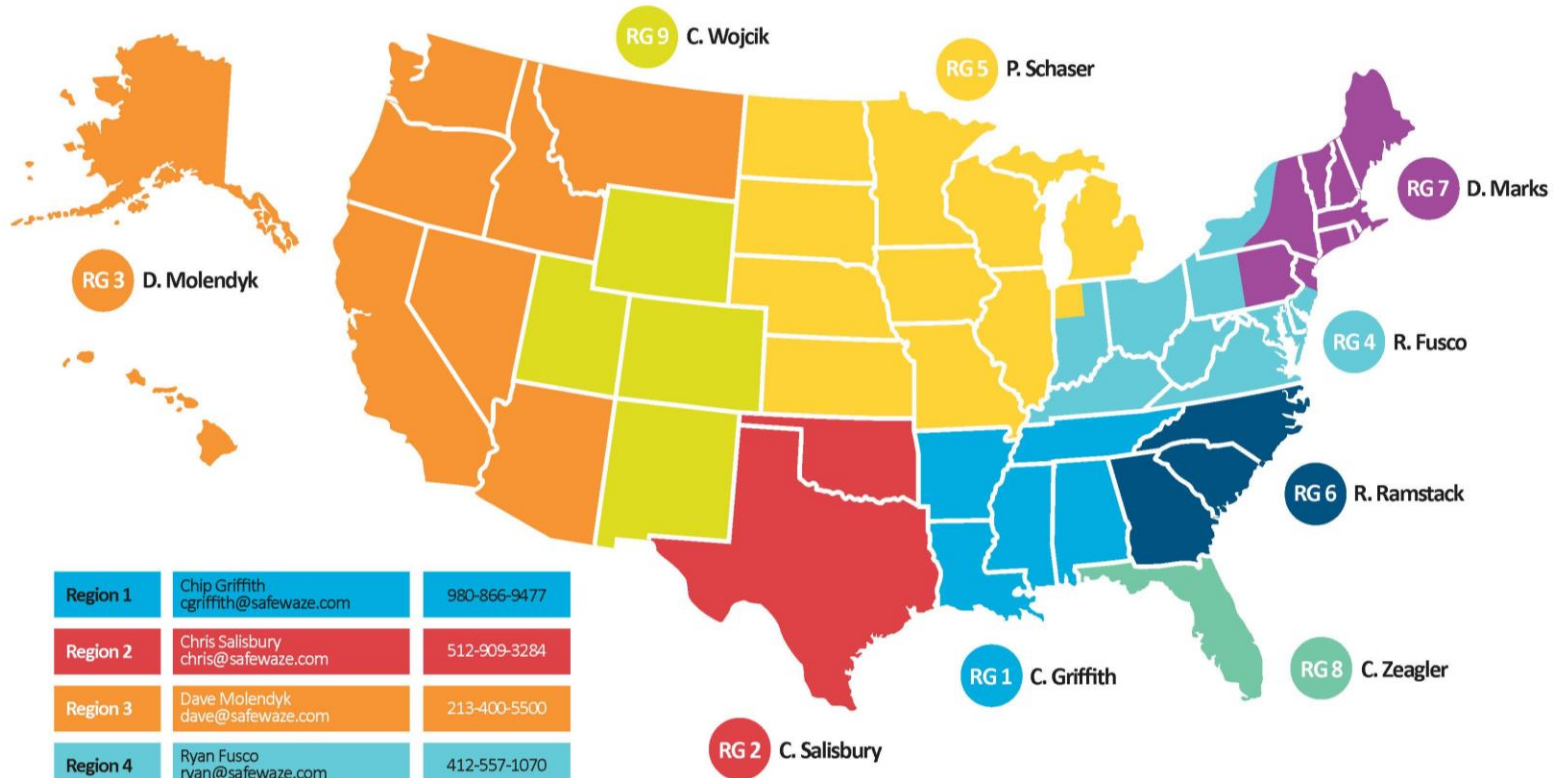
Doing the Right Things

By your side or behind the scenes, we execute strategic activity-based selling that delivers tailored results.

- Joint end user presentations and sales calls
- Pull-through strategies to the customers to you
- Cooperative partnerships to stretch your sales dollar
- Private labeling to promote your brand
- Comprehensive support for open houses, trade shows and other events
- Sales managers with extensive industry experience and on-demand knowledge



REGION MAP/CONTACTS



| | | |
|---------------|--|--------------|
| Region 1 | Chip Griffith cgriffith@safewaze.com | 980-866-9477 |
| Region 2 | Chris Salisbury chris@safewaze.com | 512-909-3284 |
| Region 3 | Dave Molendyk dave@safewaze.com | 213-400-5500 |
| Region 4 | Ryan Fusco ryan@safewaze.com | 412-557-1070 |
| Region 5 | Phil Schaser phil@safewaze.com | 262-212-2732 |
| Region 6 | Roger Ramstack rogerr@safewaze.com | 770-715-7490 |
| Region 7 | David Marks dmarks@safewaze.com | 917-763-3001 |
| Region 8 | Christian Zeagler czeagler@safewaze.com | 804-426-7895 |
| Region 9 | Chris Wojcik cwojck@safewaze.com | 720-252-5572 |
| Latin America | Fernando "Fred" Silva fsilva@safewaze.com | 619-948-9153 |
| Xtirpa Spec. | Jeremy Saenz jsaenz@safewaze.com | 317-313-1545 |

| | | |
|-------------------|------------------------|-----------------------|
| Stephen Hartsell | President | stephen@safewaze.com |
| Christian Zeagler | National Sales Manager | czeagler@safewaze.com |
| Melissa Smith | Customer Service | melissa@safewaze.com |
| Trena Shutters | Sales Support | trena@safewaze.com |

AFFILIATIONS



AMERICAN SOCIETY OF
SAFETY PROFESSIONALS





OPERATIONS

Investing in American Manufacturing

A STRONGER SAFEWAZE



Working for You

Our commitment to manufacturing in the USA and making Safewaze an employer of choice strengthens our advantage in **responding with speed and flexibility to meet your needs.**

Our expanded capacity and streamlined production, utilizing LEAN manufacturing principles, keeps us working hard for you with continued investment in our operations.

- 100,000 square foot state-of-the-art facility
- High-performance tools, equipment and processes
- Passionate people relentlessly pursuing excellence
- Every product engineered and inspected in Concord, NC





PRODUCT

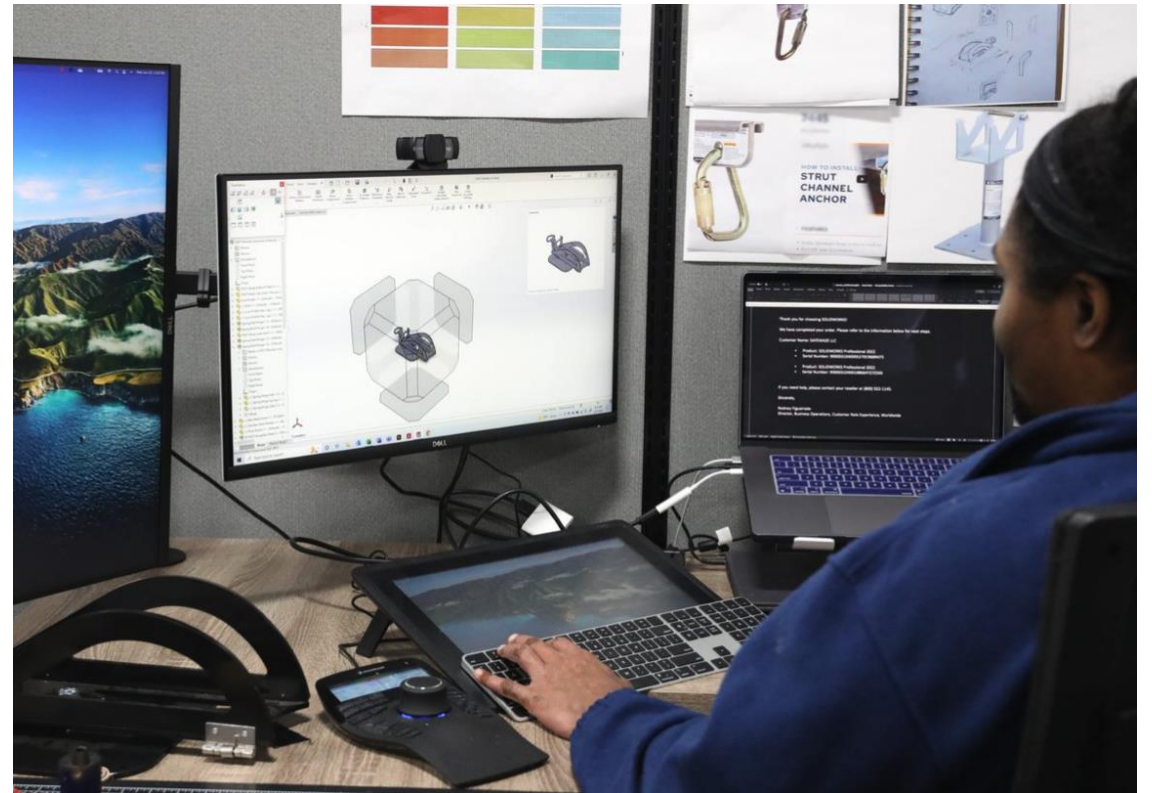
From Innovation through Testing



Winning Products

From the spark of innovation through the trials – and literal fires – of testing, our growing team is dedicated to research and development of **products that win for our customers.**

- OSHA certified in-house testing lab
- Increased speed to market and product exclusivity
- Proven product design and dependability on the job





MARKETING

Support to Help Your Sales Climb



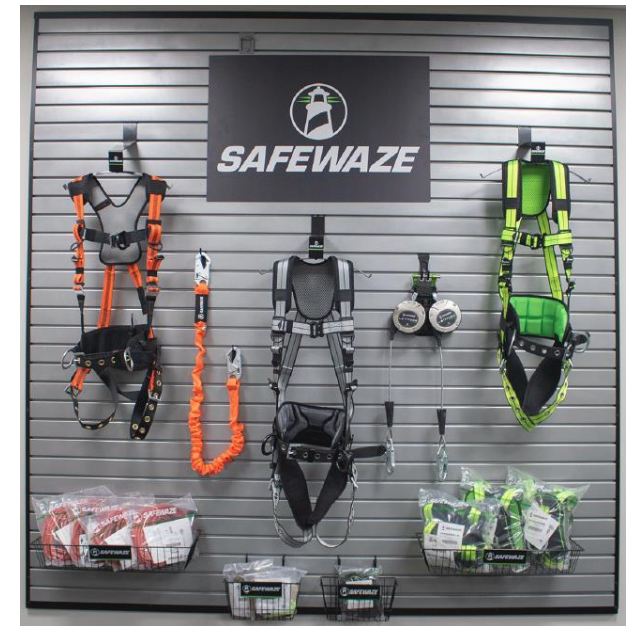
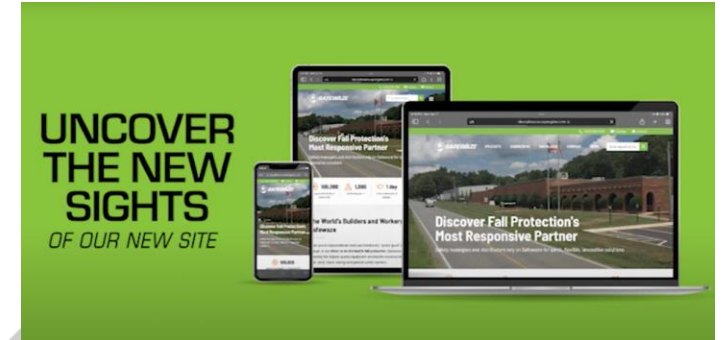
MARKETING SERVICES



Climbing Higher Together

We grow when you grow. Our marketing team is committed to providing a wide assortment of tools to do the job.

- Website – powerful filters, dynamic search, extensive library
- Product Support – descriptions, features, photography
- 2024 Catalog – comprehensive product resource
- Graphic Design – custom flyers, ads, animations
- Merchandising – branded display items
- Swag – hats, shirts, pens, stickers and more





XTIRPA™

XTIRPA

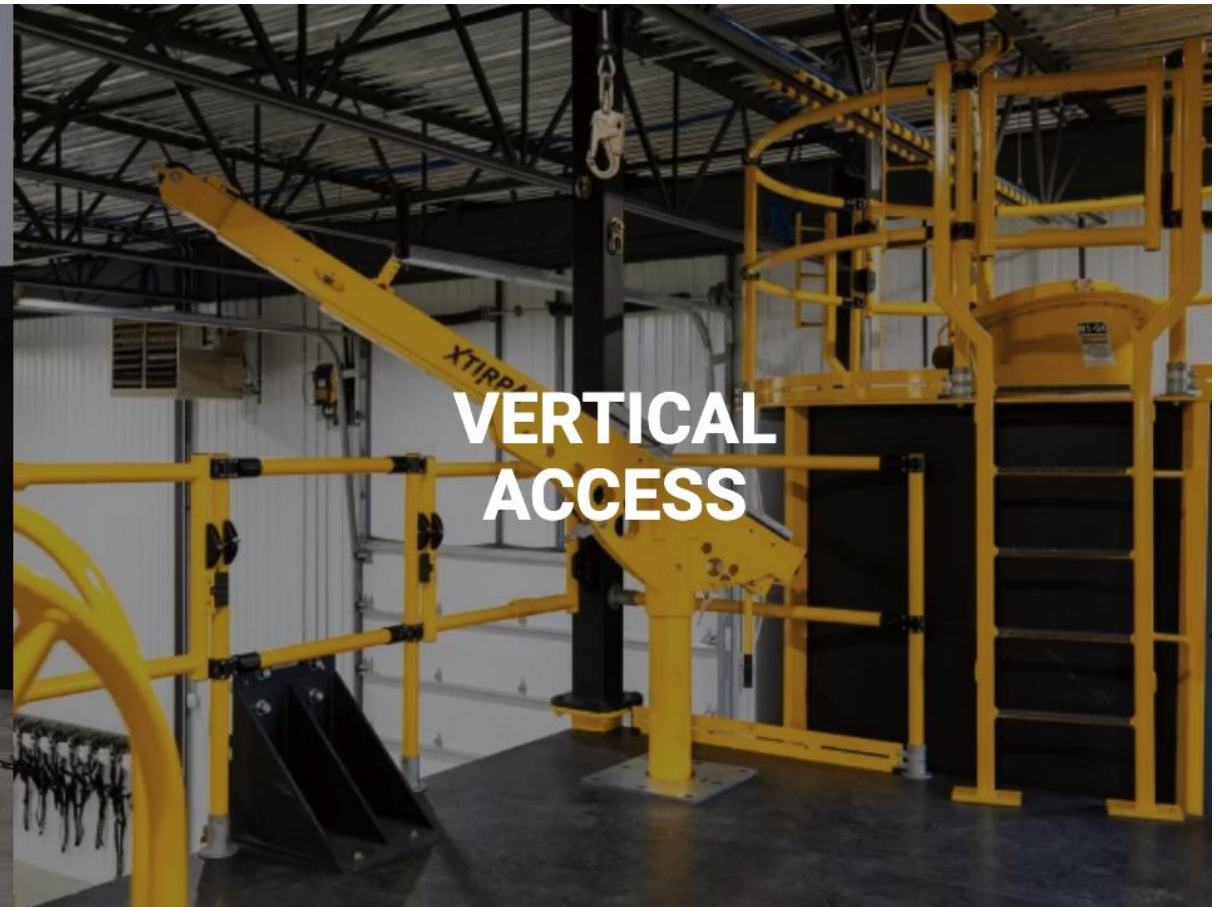
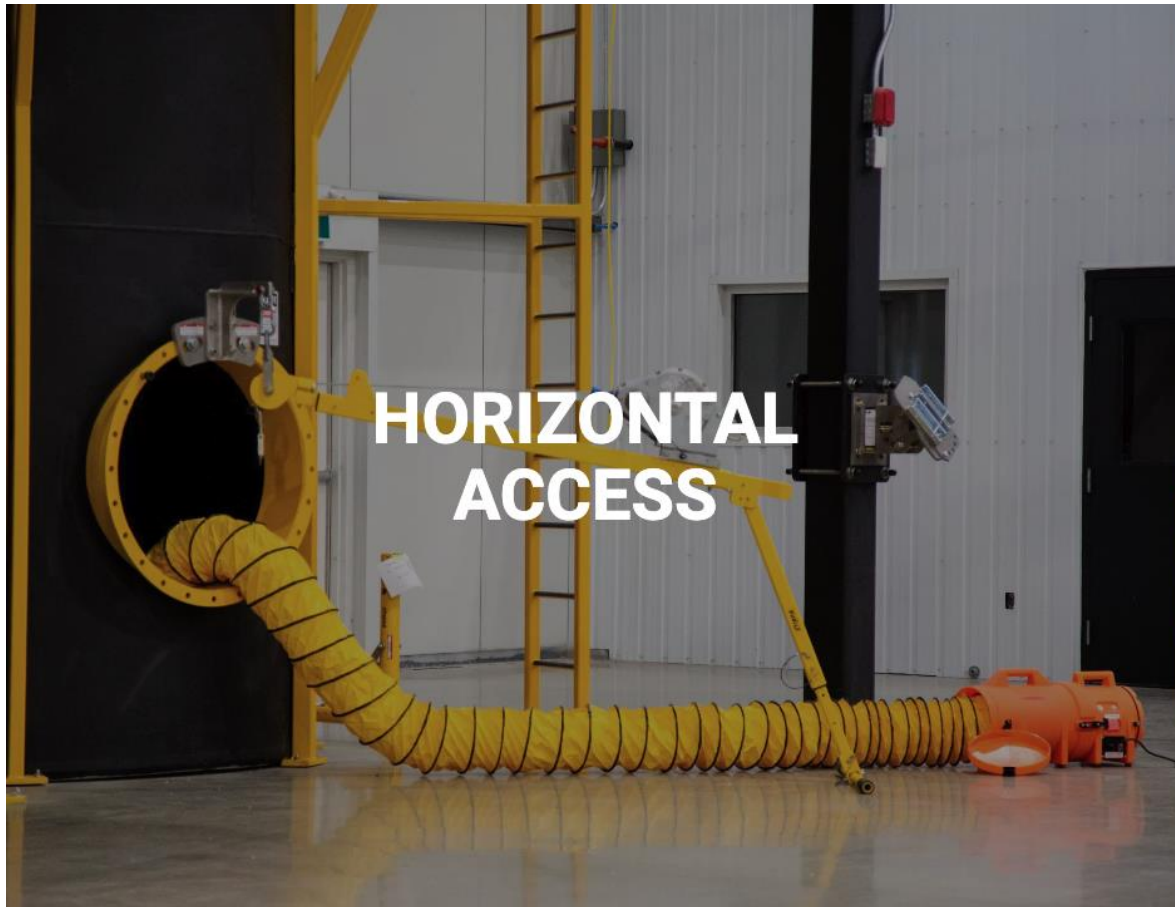
Modular Solutions for Confined Space



XTIRPA AT A GLANCE



Xtirpa is the premium global supplier of confined space fall arrest, rescue and retrieval equipment with a reputation for configurable solutions, advanced manufacturing and world-class training. Xtirpa embraces innovation to maintain a safe environment for confined space crews.





HySafe®

HYSAFE

Custom Fall Protection
Solutions Made Easy

HYSAFE AT A GLANCE



HySafe protects your people with engineered fall protection solutions from start to finish. HySafe pairs expertise and education to deliver a comprehensive approach to fall protection, providing options to ensure every project meets the client's exact needs for safety, efficiency, affordability and compliance.

Our Process:



ASSESS

We begin with a full assessment of your needs.



DESIGN

Qualified experts design solutions tailored for you.



ENGINEER

We provide solutions that meet or exceed industry standards.



INSTALL & TRAIN

Our experts install your system and train your employees.



RECERTIFY

Our recertification makes sure you're always in compliance.

Our Systems:

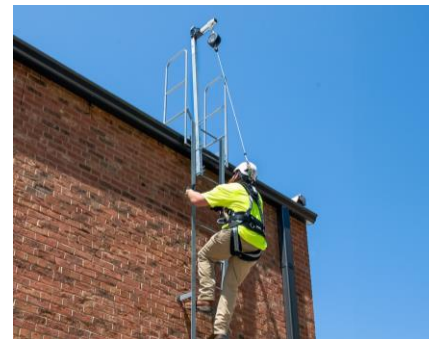
Cable Lifeline
Rigid Rail



Portable
Passive



Ladder
Confined Space



Rooftop
Custom





BEE ACCESS

The Access Industry's
Most Responsive Partner



BEE AT A GLANCE



Reach the Unreachable

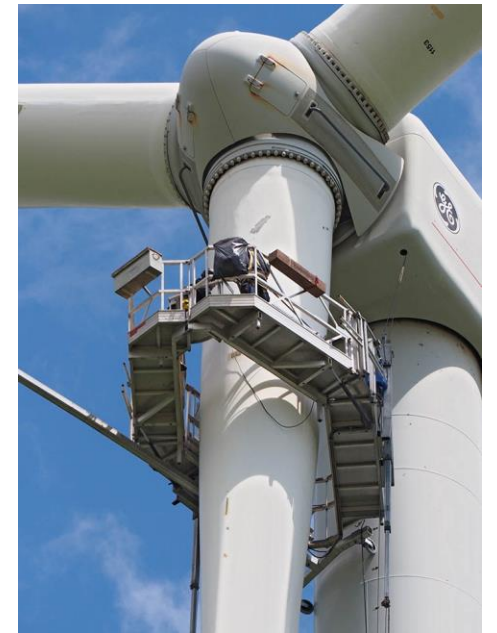
As the access industry's most responsive partner, Bee engineers and manufactures suspended access solutions.

Categories:

- Suspended platforms
- Rigging equipment
- Material hoists & transport platforms
- Permanent equipment

Trusted Brands:

- Bisomac
- Alba
- Altrex
- Up-stage
- Fixator





THANK YOU!

YOUR Most Responsive Partner

