

## Reusable Anchor for Steel and Concrete

# TOGGLE ANCHOR 023-4108

» **SIMPLE.**

Inserts easily by hand into pre-drilled hole, no tools or fasteners required for installation or removal.

» **EFFICIENT.**

Multi-directional anchorage provides a wide working radius to keep work moving.

» **HIGH VALUE.**

Lightweight, versatile use in steel and hollow core concrete applications.



# TOGGLE ANCHOR

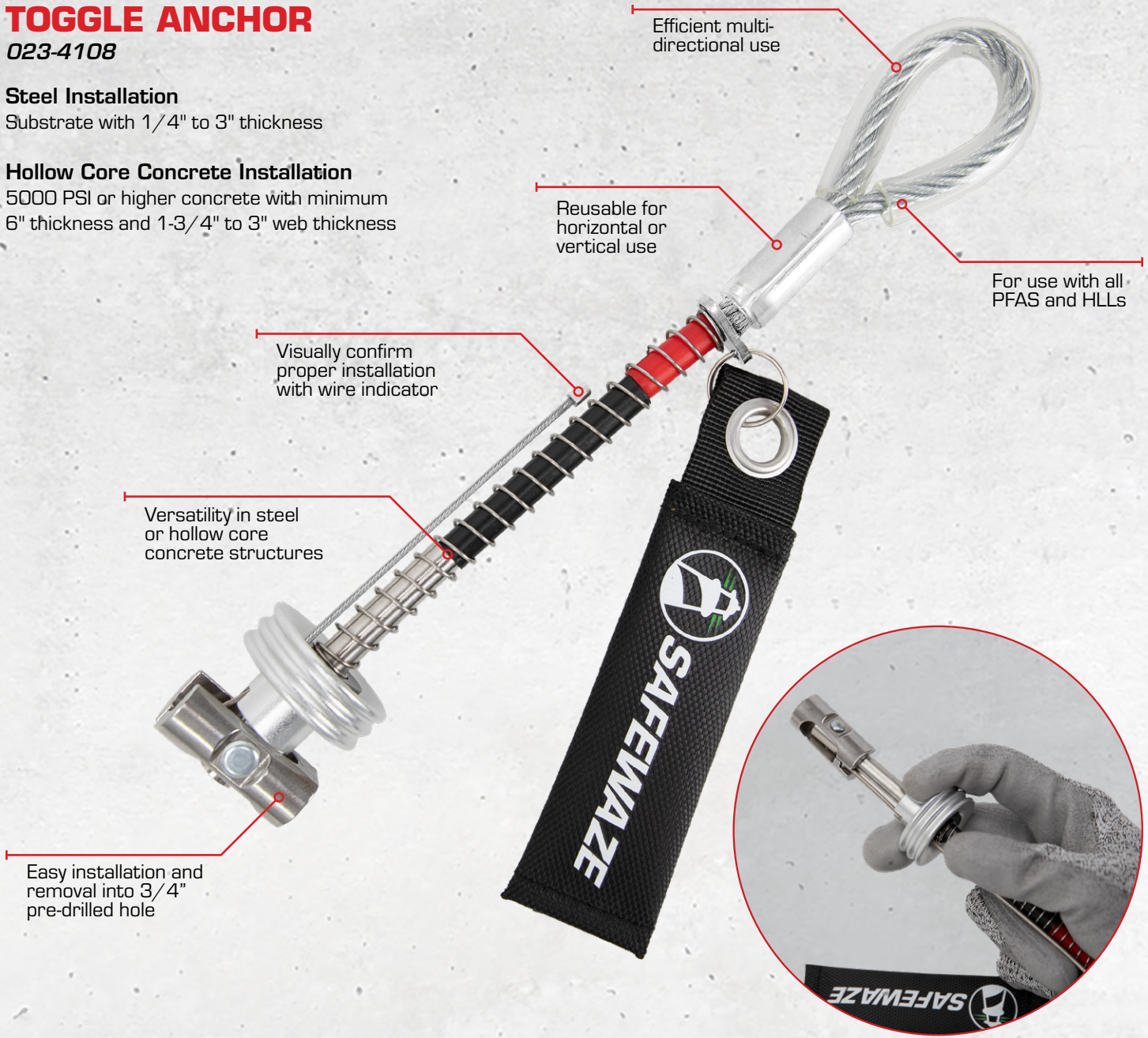
023-4108

## Steel Installation

Substrate with 1/4" to 3" thickness

## Hollow Core Concrete Installation

5000 PSI or higher concrete with minimum 6" thickness and 1-3/4" to 3" web thickness



Efficient multi-directional use

Reusable for horizontal or vertical use

For use with all PFAS and HLLs

Visually confirm proper installation with wire indicator

Versatility in steel or hollow core concrete structures

Easy installation and removal into 3/4" pre-drilled hole



## Related Anchor Products:



Removable Concrete Anchor  
022-4085



Girder Grip Anchor  
019-4007

### SPECIFICATIONS:

*Materials:* Stainless steel, aluminum

*Weight:* 0.6 lbs. (0.3 kg)

*Dimensions:* 11" x 1-1/4" x 1-1/4"

*Minimum Breaking Strength:* 5,000 lbs.

*Working Load Limit:* 1,000 lbs.

*ANSI Weight Capacity:* 130-310 lbs. (59-141 kg)

*OSHA Weight Capacity:* Up to 420 lbs. (191 kg)

*ANSI Standards:* Z359.18-2017 Type A

*OSHA Standards:* 1926.502, 1910.140, 1910.66

