



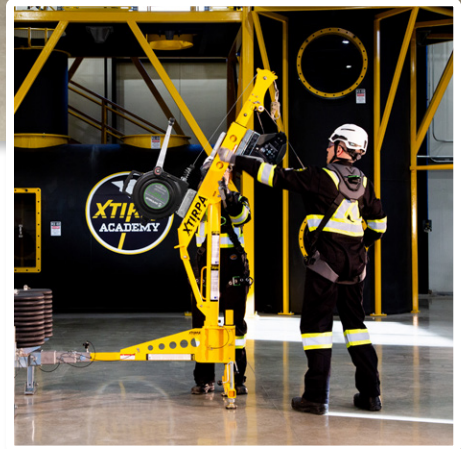
SAFEWAZE



XTIRPA

Premium Confined Space Systems

NOW STOCKING PRODUCT
in Concord, NC





INTRODUCING XTIRPA PREMIUM CONFINED SPACE SYSTEMS NOW AVAILABLE FROM SAFEWAZE

OUR NEW LINE

Safewaze is proud to introduce Xtirpa modular confined space systems as our premium line for confined space. As your most responsive partner in fall protection, we understand the difficult yet critical need for safety when entering, exiting and working within confined spaces. Further, we recognize that all job sites are unique with different needs. Xtirpa systems offer expandable solutions for fall arrest, rescue and retrieval as the perfect complement to our existing line of confined space equipment.

To continue providing the responsive service that sets us apart, Safewaze is now stocking a range of core products in Concord, NC with a fully trained sales and technical staff to support the U.S. market. Additionally, we are able to offer integrated access to the entire product line manufactured in Quebec to provide our customers with more expedient access to these premium systems.

THE XTIRPA ADVANTAGE

The Xtirpa brand is recognized as the best in the confined space market, well-known globally for its lightweight, high-quality equipment. Made from aircraft-grade aluminum, Xtirpa products deliver long-lasting durability with utmost versatility. These configurable systems have reinvented the approach to confined space with advanced manufacturing, world-class training and revolutionary design.

With a focused goal on safety in confined space, the Xtirpa line delivers lightweight, portable, expandable systems for both conventional and unconventional confined space situations with horizontal and vertical entry across a range of industries. Together, Safewaze and Xtirpa combine to offer the most responsive service and maintain the highest levels of safety for confined space crews.



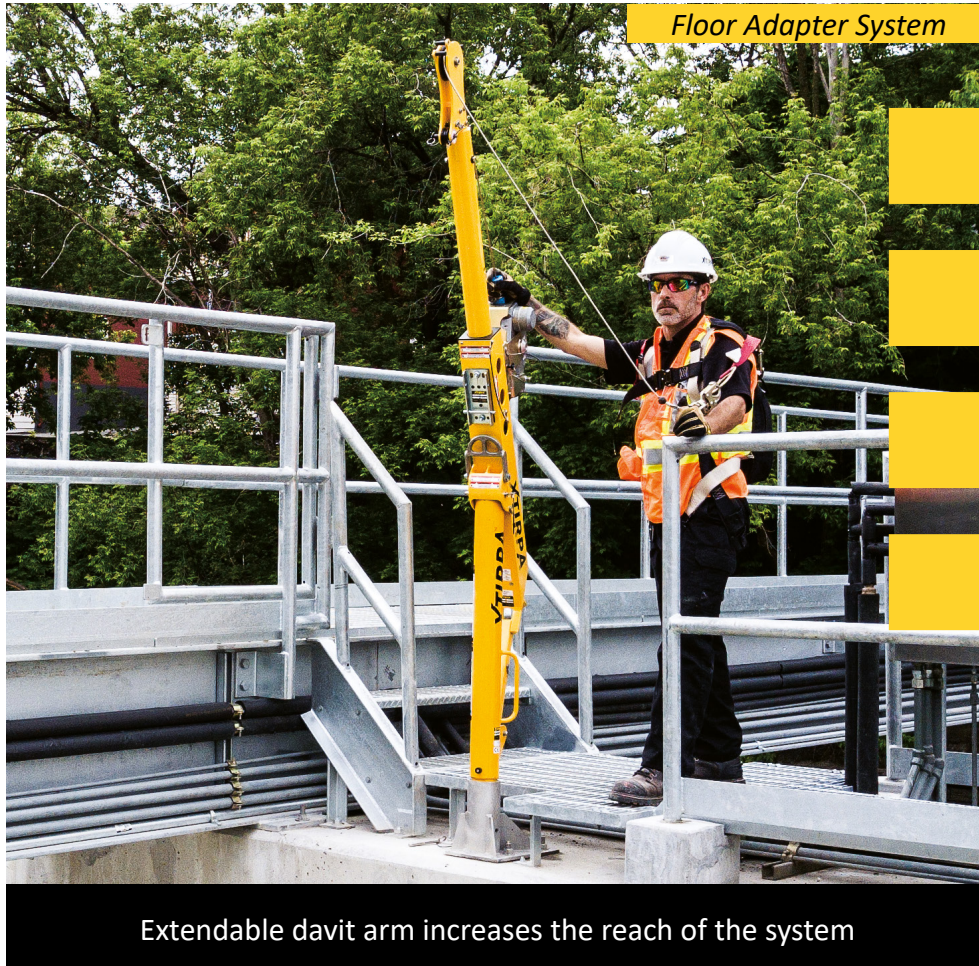
INDUSTRIES

XTIRPA systems support America's trade professionals wherever they work.

- » Public Works
- » Infrastructure
- » Construction
- » Steel Erection
- » Metal Refining
- » Oil & Gas
- » Trenchwork
- » Maritime/Shipbuilding
- » Food Processing
- » Metal Refining
- » Energy Production
- » Water Utilities
- » Petrochemical
- » Chemical Processing
- » Pharmaceutical

24" Mast-Davit Arm with Floor Adapters System

Industries: Public Works, Infrastructure, Construction, Steel, Chemical Processing



Vertical Entry

Lightweight

Portable

Easy Assembly

Extendable davit arm increases the reach of the system

System Components



- 1 Davit arm with 15"-24" reach **#IN-2210**
Weight 36 lbs



- 2 Mast for davit arm 3" diameter **#IN-2003**
Weight 23 lbs



- 3 Floor adapter 3" diameter **#IN-2005**
Weight 23 lbs





24" Mast-Davit Arm with Adjustable Wall Adapters

Industries: Water Utility, Infrastructure, Construction, Metal Refining, Trenchwork



Wall Adapter System

Vertical Entry

Portable

Easy Assembly

Options available up to 45" width

System Components



1 Davit arm with 24" reach **#IN-2210**
Weight 36 lbs

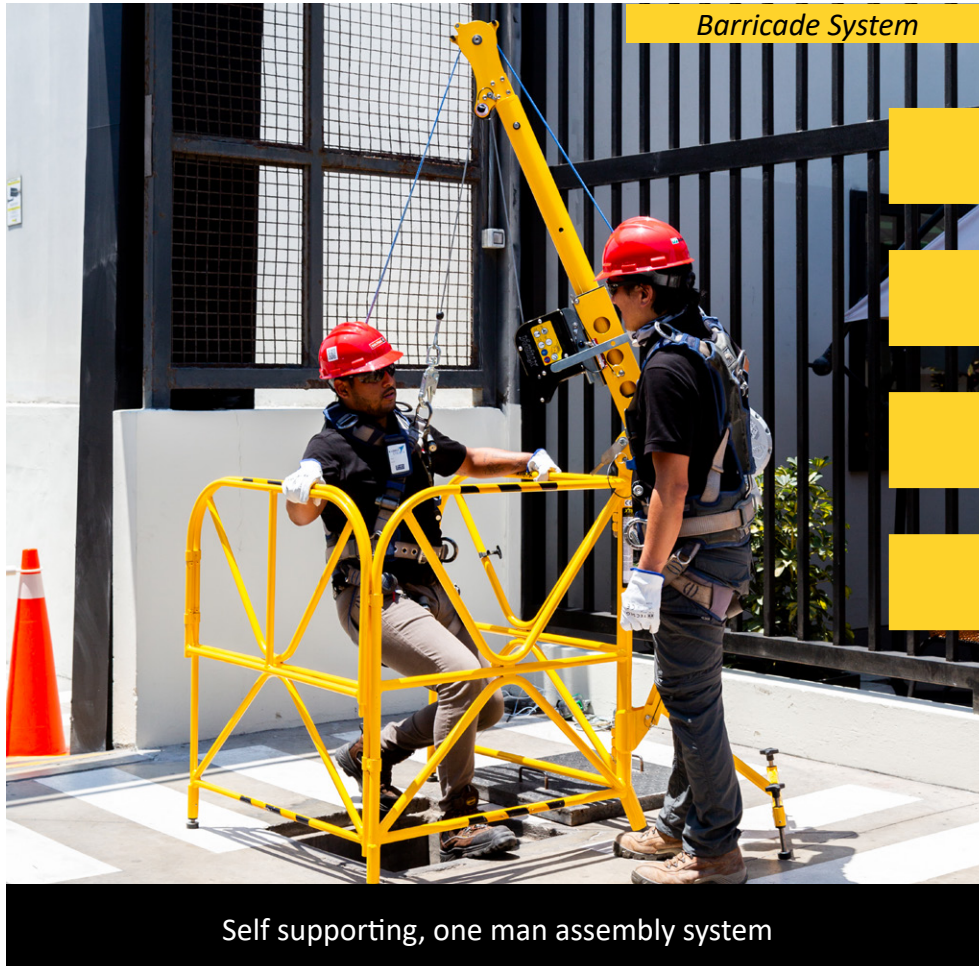
2 Mast for davit arm 3" diameter **#IN-2003**
Weight 23 lbs

3 Adjustable wall adapter 3" diameter for walls 6" to 15.75" **#IN-2008**
Weight 69 lbs



Davit Arm and Manhole Guard with Integrated Mast

Industries: Public Works, Utilities, Construction, Maritime/Shipbuilding



Vertical Entry

Lightweight

Portable

Easy Assembly

Self supporting, one man assembly system

System Components



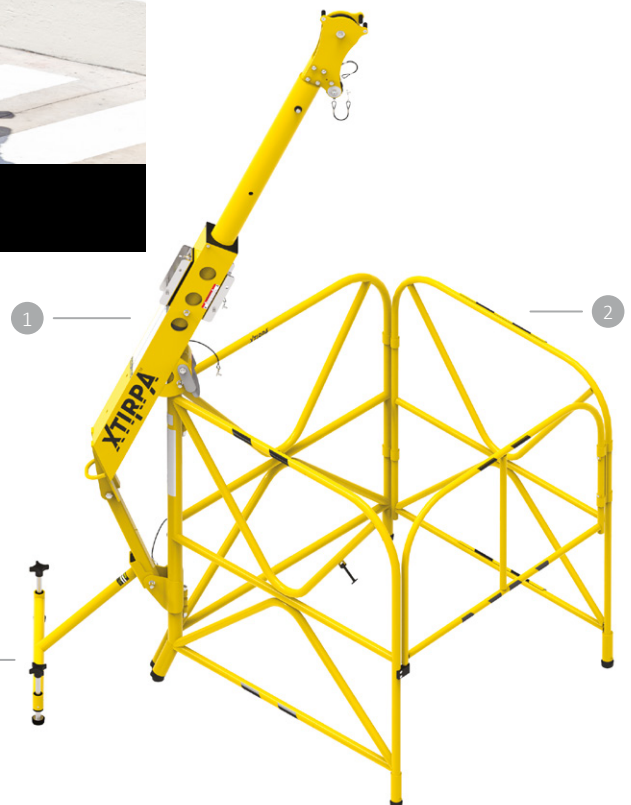
- 1 Davit arm with 24" reach **#IN-2210**
Weight 36 lbs



- 2 Manhole guard with integrated mast
42" height **#IN-2108**
Weight 33 lbs



- 3 Stabilizer for manhole guard **#A2108-18**
Weight 4 lbs





Davit Arm with Mobile "H" Base

Industries: Oil & Gas, Public Works, Petrochemical



Vertical Entry

Portable

Provides a wide base for stable platform

System Components



1 Davit arm with 24" reach **#IN-2210**
Weight 36 lbs

2 Mast for davit arm 3" diameter **#IN-2003**
Weight 23 lbs

3 Mobile H base 58" width **#IN-2118**
Weight 95 lbs



24" Mast-Davit Arm with Hitch Mount Stabilizer

Industries: Public Works, Food Processing, Petrochemical, Oil & Gas



Trailer Hitch Mount System

Vertical Entry

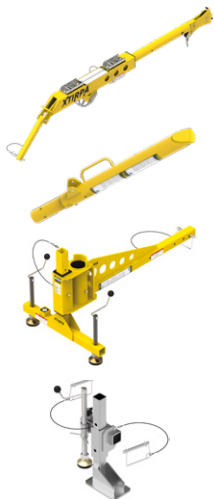
Portable

Easy Assembly

Expandable

Self supporting, one man assembly system

System Components

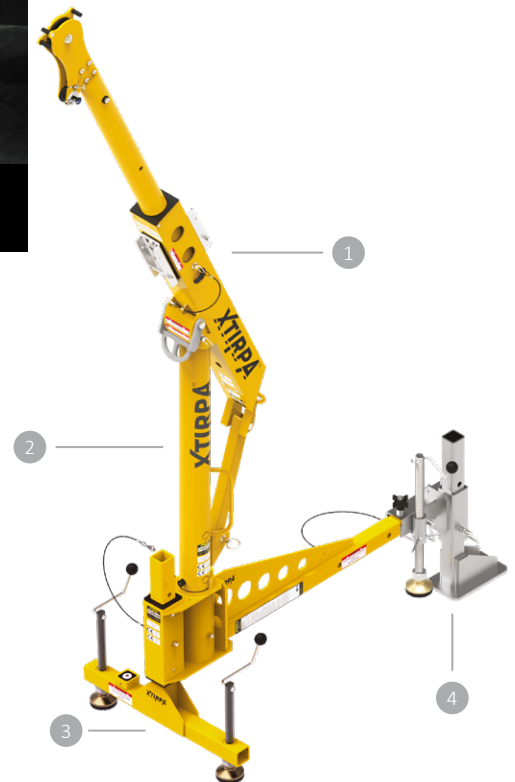


1 Davit arm with 24" reach **#IN-2210**
Weight 36 lbs

2 Mast for davit arm 3" diameter **#IN-2003**
Weight 23 lbs

3 Hitch Mount with stabilizer 24" width,
3" diameter **#IN-2126**
Weight 38 lbs

4 Anchor bolt adapter, 3" diameter **#A2126-21**
Weight 35 lbs





30"-48" Mast-Davit Arm with Adapters

Industries: Metal Refining, Food Processing, Energy Production



Three different lengths for multiple applications

Vertical Entry

Portable

Easy Assembly

System Components



- 1 Extendable davit arm with 30"-48" reach **#IN-2237**
Weight 50 lbs

- 2 Mast for davit arm 4" diameter **#IN-2240**
Weight 23 lbs

- 3 Center mount floor adapter, 4" diameter **#IN-2254**
Weight 44 lbs



Counterweight System

Industries: Water Treatment, Water Utilities



Vertical Entry

Portable

Easy Assembly

Expandable

Cost efficient solution for large water treatment facilities

System Components



- 1 Extendable davit arm with 30"-48" reach **#IN-2237**
Weight 50 lbs
- 2 Mast for davit arm 4" diameter **#IN-2240**
Weight 23 lbs
- 3 Universal T-base 4" diameter **#IN-2305**
Weight 73 lbs
- 4 Extension tubes for counterweight base 96" length **#A2305-40**
Weight 97 lbs
- 5 Counterweight Trolley **#IN-2525**
Weight 497 lbs
- 6 Weights **#P2525-017** Quantity of 40 needed
Weight 50 lbs ea





60"-96" Mast-Davit Arm with Adapters

Industries: Water Treatment, Steel Erection, Maritime/Shipbuilding



Vertical Entry

Portable

Easy Assembly

Expandable

Longest davit arm on the confined space market

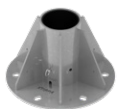
System Components



- 1 Davit arm 60"-96" reach **#IN-2197**
Weight 136.7 lbs



- 2 Mast for davit arm 5" diameter **#IN-2199**
Weight 32.9 lbs



- 3 Round center mount floor adapter,
5" diameter **#IN-2546**
Weight 64 lbs



Pole Hoist System

Industries: Chemical, Food Processing, Pharmaceutical



Horizontal/Vertical

Portable

Easy Assembly

Expandable

Only pole hoist system certified for horizontal and vertical retrieval

System Components



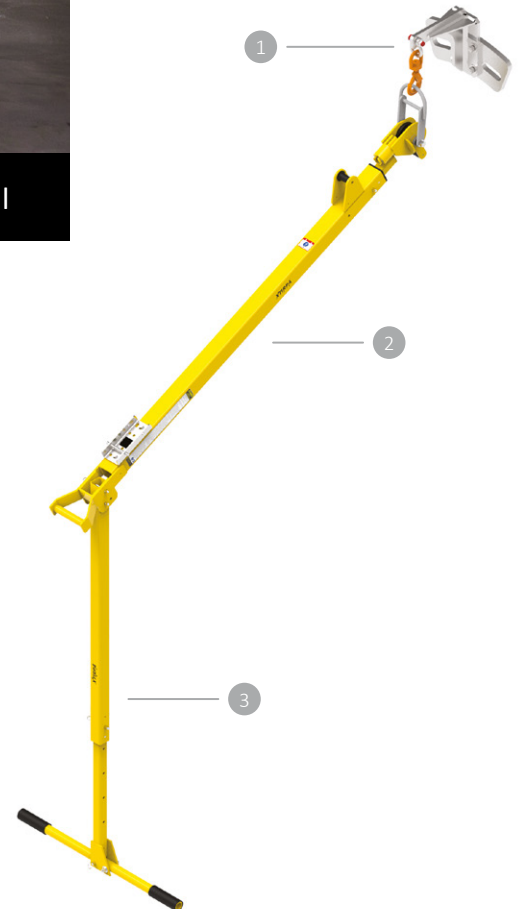
- 1 Flange adapter for lateral entry **#IN-2242**
Weight 33 lbs



- 2 Pole hoist 55"-72" **#IN-2337**
Weight 22 lbs



- 3 36"-48" Adjustable height T-bar leg for pole hoist **#IN-2127**
Weight 8 lbs



XLT System

Industries: Heavy Vehicle Maintenance, Rail Yards, Industrial Manufacturing



Portable

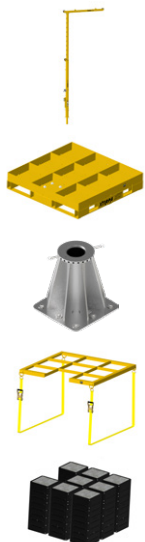
Work at Height

Easy Assembly

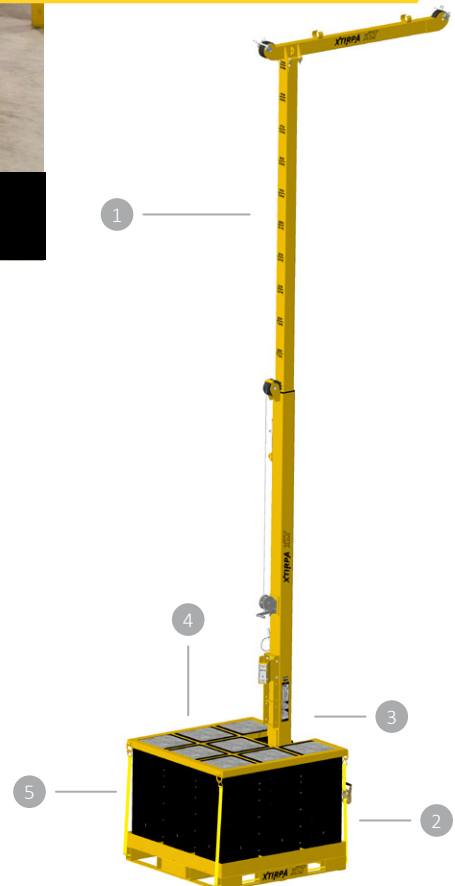
25' height with 9' reach

Built-in rescue and retrieval system

System Components



- 1 Xtirpa XLT Mast-Davit Arm 15'-25'
(1' increments) **#IN-5054**
Weight 630 lbs
- 2 Base for Adjustable Davit Arm **#A5039-12**
Weight 538 lbs
- 3 Floor adapter **#IN-5040**
Weight 130 lbs
- 4 Weight transportation **#A5039-46**
Weight 90 lbs
- 5 Kit of 8 molds for XLT with concrete
poured **#A5039-58**
Weight 7080 lbs





What About Brackets and Devices?

When you need them, we have what you need.

Safewaze Brackets & Devices

Safewaze confined space devices fit seamlessly on Xtirpa systems. Simply order a Safewaze device already equipped with the correct bracket to fit Xtirpa equipment – or order the bracket update kit that you need to retrofit your device easily in the field. *New brackets continue to fit our existing Universal Tripod Bracket.*

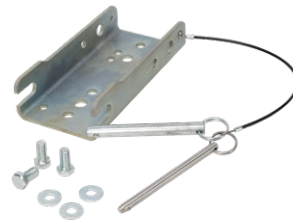
Competitor Brackets

If you have a competitor device that you want to use with an Xtirpa system, we have you covered. Safewaze is stocking a variety of brackets to make it easy to use your existing devices with the Xtirpa confined space systems. *Our expert sales and service teams can help you find exactly what you need.*



024-11042 & 024-11043

65' & 120' 3-Way Systems,
Universal Mount –
Xtirpa Mounting Capable



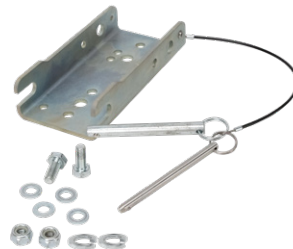
024-11048

3-Way Device Bracket
Update Kit



024-11046

65' Material Winch –
Xtirpa Mounting Capable



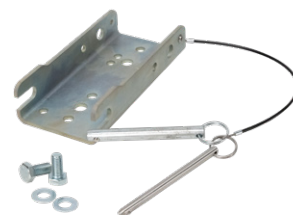
024-11049

Material Winch Device
Bracket Update Kit



024-11044 & 024-11045

65' & 115' Personnel Winch –
Xtirpa Mounting Capable



024-11050

Personnel Winch Device
Bracket Update Kit



STATOIL
GLITNE 15/5

INTRODUCING XTIRPA

PREMIUM CONFINED SPACE SYSTEMS
NOW AVAILABLE FROM SAFEWAZE



225 Wilshire Avenue SW, Concord NC 28025

• 800-230-0319

• safewaze.com

