

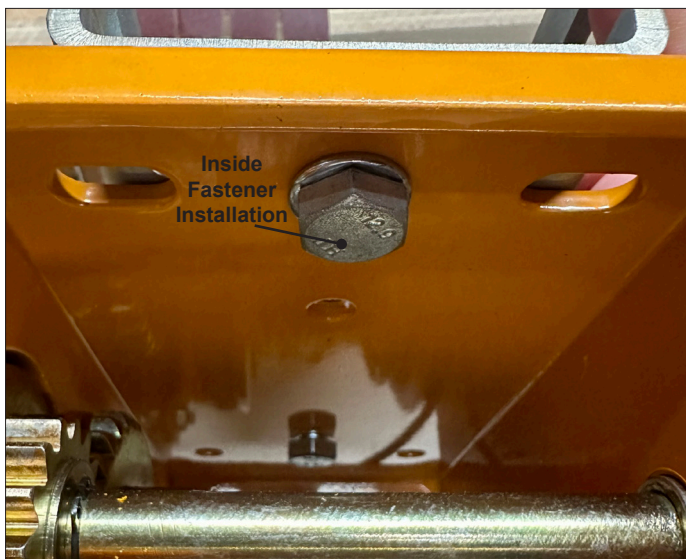


Safewaze has redesigned the device bracket of the Material Winch to accommodate Xtirpa systems.

In order to retrofit an existing device in the field, please follow these instructions:

1. Order the new device bracket (024-11049, bracket and fasteners included).
2. Remove current fasteners and bracket from Material Winch. This may require some force if Loctite is present on original bolts.
3. Align the new bracket onto the device as shown.
4. Reinsert new fasteners as shown. For the inside, a flat washer and then bolt. For the outside, a flat washer, split lock washer, and then nyloc nut.
5. Torque bolts to 45-50 Nm. Installer will need 2 wrenches to tighten bolts from both the inside and outside. Be careful not to over-torque.

| 024-11049 Fasteners: |
|------------------------|
| (2) M10 x 1.5mm Bolts |
| (4) Flat Washers |
| (2) Split Lock Washers |
| (2) Nyloc Nuts |



Refer to the Safewaze manual provided with the product, or available online, for proper use and additional installation information.

For any questions regarding the information in this Instruction Sheet, please contact Customer Service at (800) 230-0319.