



FS-EX2502

SafeLink Form Link Anchor

FEATURES :

- The FS-EX2505 base is designed for use with the Safewaze SafeLink HLL system.
- Includes 2-piece aluminum bracket kit, 2 steel threaded rods, and 2 wingnut brackets.
- For use with the FS-EX5501-5 aluminum post.
- Allowed working radius: +/- 15° perpendicular to the anchor point. Do not side load.
- Not for 360° tie-off, not for use with FS-EX2514 SafeLink Whizzler Swivel Cap.
- Requires 1 1/2" supporting block for installation (not included). See manual for details.

MOUNTING OPTIONS:

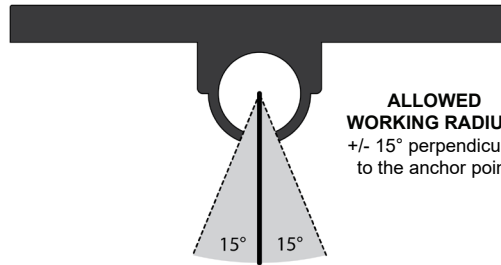
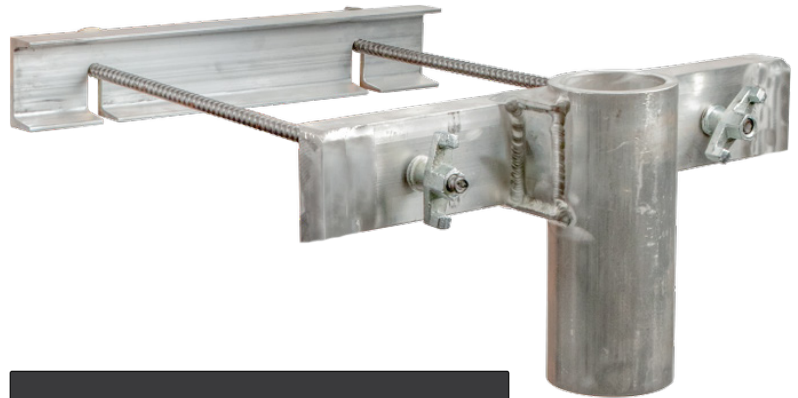
- (6) #7 or larger stirruted rebar
- Finished wall (min 8" thick)
- Clamped around a finished column

MINIMUM BREAKING STRENGTH:

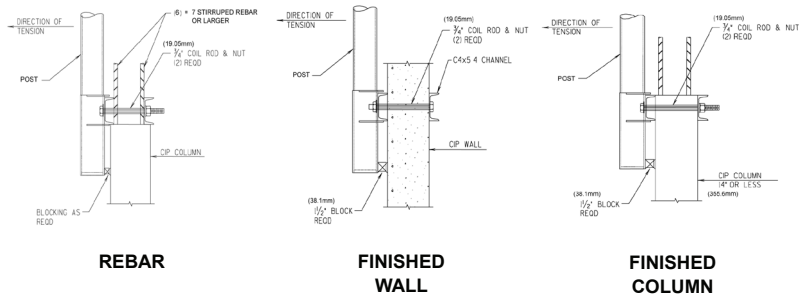
- 3,600 lbs. (1633 kg)

ITEM WEIGHT :

- 26 lbs. (11.8 kg)



ALLOWED WORKING RADIUS:
+/- 15° perpendicular to the anchor point



USER WEIGHT CAPACITY	
ANSI	130-310 lbs. (59-140.6 kg)
OSHA	N/A

STANDARD COMPLIANT WITH	
ANSI	N/A
OSHA	1926.502

SIZE(S)	
N/A	

COMPONENT	MATERIAL SPECIFICATION
Bracket	6061-T6511 aluminum
Wingnuts	Zinc plated steel
Thread bar	Zinc plated steel