

The Do's and Don'ts TIE-BACK CONNECTORS

A tie-back connector is one piece of equipment that meets two needs at once:

- [1] It is a standard connector, such as a self-retracting lanyard (SRL) or energy absorbing lanyard.
- [2] It is also designed to act as a fully functional anchorage connector.

The tie-back eliminates the need for a separate anchor device, allowing users to wrap the connector around an existing structure and connect back to itself. Suitable anchorage includes many types of beams, columns and girders. As with all anchor points, usage should be confirmed by an appropriate competent or authorized person.

Tie-back equipment has been specifically engineered and tested for tie-back use. These units typically include more durable materials and hardware. Webbing is usually heavy duty or may be covered by a wear pad for added protection. A 5,000 lb. gate rated tie-back hook is generally used in order to withstand the added forces of tie-back use, specifically gate loading.

Benefits of a tie-back connector:

- Eliminates the need for a separate anchorage connector.
- Saves money by reducing the amount of equipment required onsite.
- Increases mobility for workers with an anchor point that moves with them.
- Adds versatility when anchor points are too large to fit connecting hook.

OSHA states that unless a hook is specifically designed for connecting back to itself, it shall not be attached directly to webbing, rope or wire. A user should never tie a connector back into itself unless that unit is specifically designed to do so.



LATITUDE 6' Web Tie-Back SRL with Replaceable Leg

Unique design is engineered to easily replace a worn or damaged leg with a new one! *

INNOVATION

- Save money by replacing only the leg rather than entire SRL
- Snap hook attaches to O-ring
- Custom leg lengths available to fit your specific need



021-5278



021-5278

6' Dual Web SRL

021-5279

37" Tie-Back Leg

021-5282

6' Single Web SRL

CUSTOM

Ask about custom lengths

* Web inspection guide on reverse

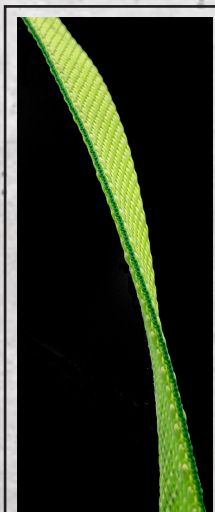
LATITUDE

Inspection Guide for Replaceable Tie-Back Leg

As with all fall protection equipment, tie-back connectors should be inspected before each use.

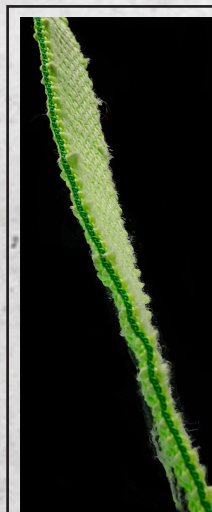
When attaching a tie-back hook directly to the webbing of a unit, carefully check the webbing both visually and by touch for severe wear. Check both edges for breakdown and warping plus check both sides for excessive fuzz or loose fibers. Remove any units with severely worn webbing or other damage from service immediately.

No Wear
(Serviceable)



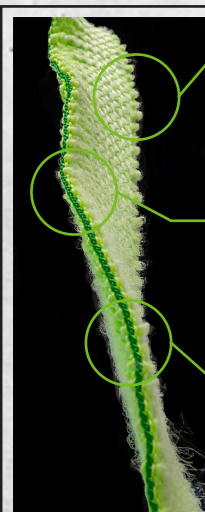
11,260 lbs.
Tensile Strength
(No Edge Contact)

Medium Wear
(Serviceable)



5,044 lbs.
Tensile Strength
(2,500 Edge Contacts)

Severe Wear
(Remove from Service)



3,507 lbs.
Tensile Strength
(5,500 Edge Contacts)



Severe edge
lock stitch
breakdown



Significant
warping
of webbing



Excessive "fuzz"
on both sides of
webbing

LATITUDE

PRO TIE BACK

7' Web Tie-Back SRL

PROTECTED WEBBING

- Fully covered leg with durable wear pad
- Available in both 20" and 40" tie-back options
- Translucent housing for easy inspection
- Tie-back snap hook attaches to webbing



018-5032

018-5028	7' Single Web SRL: No Attachment, 40" Tie-Back
018-5029	7' Single Web SRL: Carabiner, 40" Tie-Back
018-5030	7' Single Web SRL: Triple Lock Carabiner, 40" Tie-Back
018-5031	7' Single Web SRL: Alu Carabiner, 40" Tie-Back
018-5032	7' Dual Web SRL: FS-EX313, 40" Tie-Back
018-5033	7' Dual Web SRL: FS-EX313, Carabiner, 40" Tie-Back
018-5034	7' Dual Web SRL: FS-EX313, Triple Lock Carabiner, 40" Tie-Back
018-5035	7' Dual Web SRL: FS-EX313, Alu Carabiner, 40" Tie-Back
018-5036	7' Dual Web SRL: 9013 BWB, 40" Tie-Back
019-5136	7' Dual Web SRL: 1014 BWB, 40" Tie-Back
018-5037	7' Dual Web SRL: 9013 BWB, 20" Tie-Back
019-5137	7' Dual Web SRL: 1014 BWB, 20" Tie-Back

LATITUDE

HD

7' & 11' Web Tie-Back SRL

HEAVY DUTY

- Superior heavy-duty housing and high-strength webbing
- Fully protected leg with durable wear pad
- Tie-back snap hook attaches to webbing



FS-FSP1407-W-TBH

FS-FSP1407-W-TBH	7' Single Web SRL: Carabiner, 20" Tie-Back
FS-FSP14075-W-TBH	7' Dual Web SRL: FS-EX313, Carabiner, 20" Tie-Back
FS-FSP1411-W-TBH	11' Single Web SRL: Carabiner, 20" Tie-Back

PRO

6' Tie-Back Energy Absorbing Lanyards

PERFORMANCE

- UV and abrasion resistant webbing
- Tie-back hook option attaches to webbing
- Snap hook option attaches to adjustable O-ring to fit structure size



FS456

FS456	6' Dual Tie-Back Lanyard: Adjustable Ring
FS455	6' Single Tie-Back Lanyard: Adjustable Ring
FS451	6' Dual Tie-Back Lanyard
FS450	6' Single Tie-Back Lanyard



225 Wilshire Avenue SW, Concord NC 28025 • 800-230-0319 • safewaze.com