



WORLD OF CONCRETE®

**COME JOIN SAFEWAZE! January 17-20, 2017
Booth # N3252**

We will have our SAFEWAZE MOBILE SAFELINK HORIZONTAL LIFELINE on Demo!!!

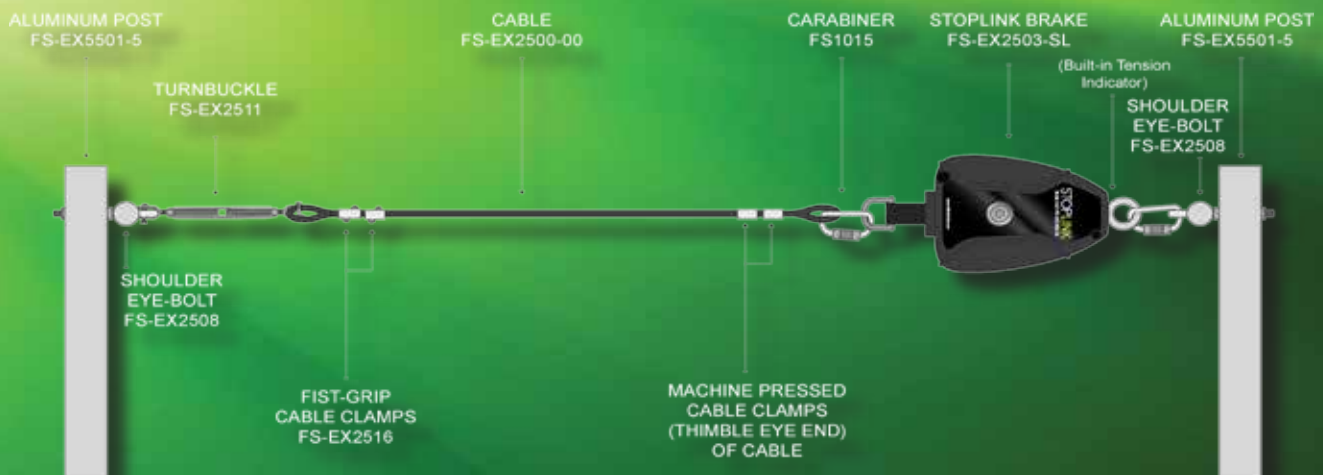
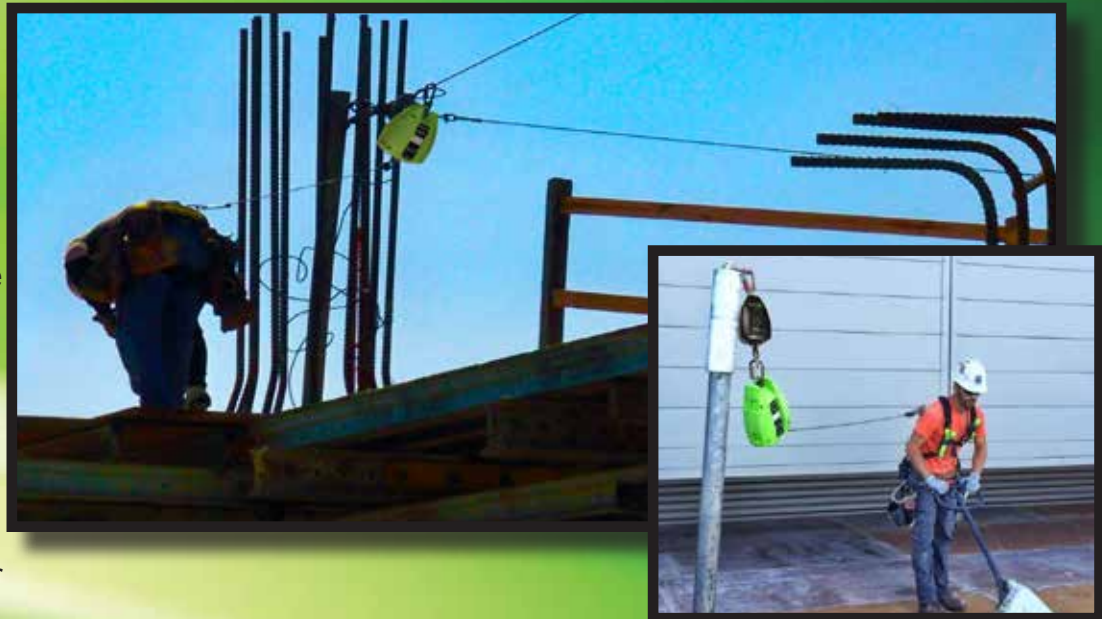
Stop by our booth for a FREE GIFT

***Fill out the information on the back, and bring it with you to receive FREE GIFT**

SafeLink Horizontal Lifeline

SAFEWAZE Mobile SafeLink system is the result of a decade of development. It addresses the difficulties and limitations of working at leading edges on the top surface of a building under construction as well as other applications where workers are required to work horizontally, and a low clearance fall hazard exists.

The STOPLINK Brake limits arresting forces, which allows for more versatility in fall protection coverage.



Fall Arrest Systems • Confined Space • Engineering • Rescue Systems
SAFEWAZE.COM • Phone: 704-262-7893 • Fax: 704-262-9051



**COME JOIN SAFEWAZE! January 17-20, 2017
Booth # N3252**

***Fill out the below information and bring it with you to receive FREE GIFT**

Shipping Information for Free Gift

First, Last Name

Company Name

Email

Phone Number

Street Address
(P.O. Box not valid)

City, ST ZIP Code

*Please print both sides



Fall Arrest Systems • Confined Space • Engineering • Rescue Systems
SAFEWAZE.COM • Phone: 704-262-7893 • Fax: 704-262-9051